



# ICC World Chambers Federation (WCF) General Council Elections **2025 Guidelines**

The guidelines explain the election process taking place from December 2024 to May 2025, the structure of the WCF Governing Bodies and how to participate as a candidate and/or voter.

# Table of contents

<b>2</b>	<b>Foreword</b>
<b>3</b>	<b>About the ICC World Chambers Federation (WCF)</b>
<b>4</b>	<b>WCF General Council election timeline</b>
<b>5</b>	<b>WCF Governance</b>
<b>6</b>	<b>WCF Governing bodies</b>
<b>9</b>	<b>WCF General Council election process</b>
<b>12</b>	<b>FAQ</b>

## Foreword

This document serves as a comprehensive guide for chamber leaders who consider candidating at the elections and for voters to understand the election process. It outlines the election timeline and key dates, introduces the ICC World Chambers Federation and explains the role of its governing bodies and responsibilities of General Council representatives.

Lastly, it details the candidacy submission process, the criteria candidates are expected to meet, the election rules, and answers to Frequently Asked Questions.

# ICC World Chambers Federation

The ICC World Chambers Federation (WCF) is the forum that connects chambers across borders, creating a better environment for business and MSMEs, and driving prosperity and opportunity for all.

As a non-political, non-governmental body, WCF is the backbone of the chamber community, providing a platform for chamber

leaders to communicate and collaborate on matters of mutual interest and facilitate beneficial partnerships. The extensive network of WCF member chambers plays a pivotal role in connecting the International Chamber of Commerce (ICC), the world's largest business organisation, to SMEs worldwide and in promoting the important role SMEs play in the global economy.



"With a network of chambers in over 120 countries, representing millions of businesses worldwide, the ICC World Chambers Federation holds a unique ability to connect and facilitate cross-border business. Joining our General Council is the ideal way to help shape the future of chambers and enhance the services and programmes that support our business communities."

**Rifat Hisarcıkloğlu**

WCF Chair and President of the Union of Chambers and Commodity Exchanges for Türkiye (TOBB)

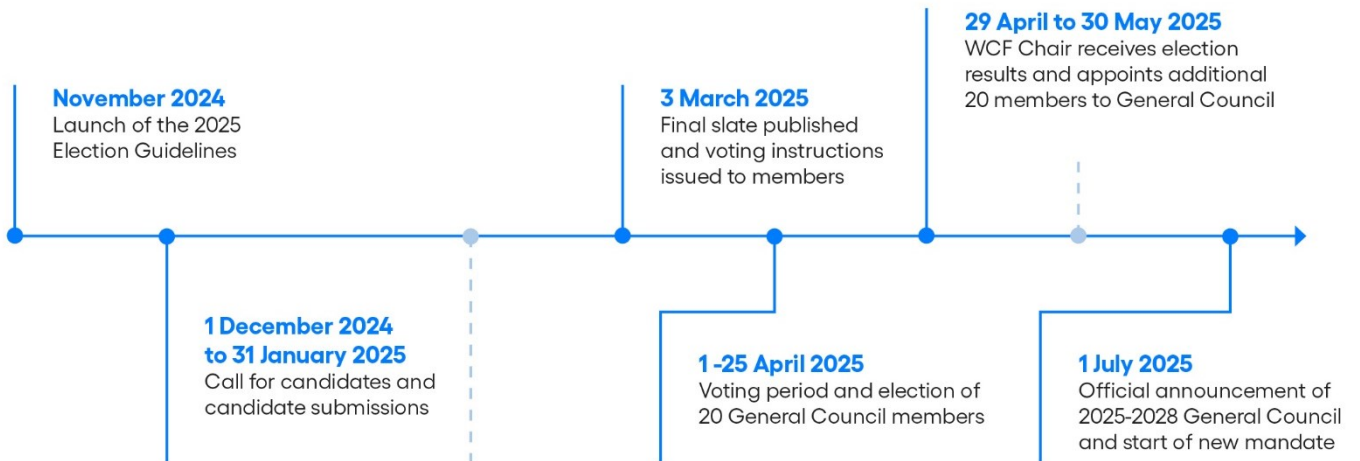


"Chambers play a pivotal role in driving local change. We seek pioneering leaders from chambers to join our General Council, and we especially encourage women to submit candidacies. Their participation will enhance the diversity of the WCF's governing body and advance the movement towards gender parity within the chamber community."

**Marie-Christine Oghly**

WCF First Vice-Chair and Vice-Chair of International Development of the Paris Region Chamber of Commerce

# Election timeline



## Additional information

Please click the links below for more information about our governance.

[ICC World Chambers Federation Articles](#)

[ICC Constitution](#)

[ICC Governance Principles](#)

## Contact

If any questions or difficulties arise, please do not hesitate to contact H el ene Kolmodin, WCF Coordinator, at [helene.kolmodin@iccwbo.org](mailto:helene.kolmodin@iccwbo.org).



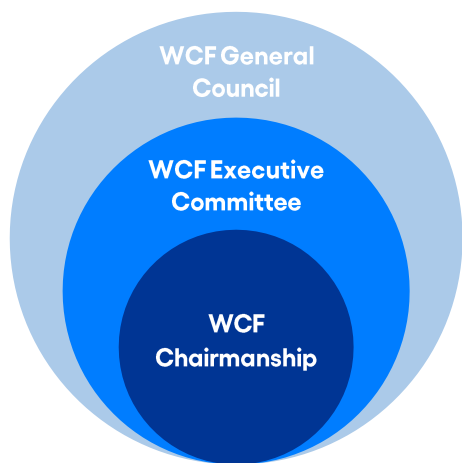
# WCF Governance

The WCF Chairmanship, WCF Executive Committee and WCF General Council are the governing bodies working together to pursue the following WCF objectives:

**1.** Increase WCF's **institutional standing** and **outreach** to chambers worldwide

**2.** Develop **programmes** and **services** for chambers to better support their **members**.

## WCF Structure



### WCF Chairmanship

- **Rifat Hisarcıkloğlu**  
WCF Chair  
President, Union of Chambers and Commodity Exchanges of Türkiye (TOBB)
- **Marie-Christine Oghly**  
WCF First Vice Chair  
Vice-Chair, International Development, Paris Region Chamber of Commerce

### WCF Executive Committee

- **Peter McMullin**  
WCF Vice-Chair—Oceania and Southeast Asia  
President, Confederation of Asia Pacific Chambers of Commerce and Industry
- **Dario Gallina**  
WCF Vice-Chair—Europe  
President, Torino Chamber of Commerce
- **Todd Letts**  
WCF Vice-Chair—Americas  
Former CEO, Brampton Board of Trade
- **Hassan Al Hashemi**  
WCF Vice-Chair—MENA Region  
Vice President, International Relations, Dubai Chambers
- **Toki Mabogunje**  
WCF Vice-Chair—Africa  
Past President and Honorary Life Vice President, Lagos Chamber of Commerce and Industry

- **Yu Jianlong**  
WCF Vice-Chair—Asia  
Secretary-General, China Council for the Promotion of International Trade  
Executive Vice Chairman, China Chamber of International Commerce

### Ex-officio members

- **John W. H. Denton AO**  
ICC Secretary General
- **Julian Kassum**  
WCF Director and ICC Deputy Secretary General—Network

### WCF General Council

- WCF Executive Committee members
- Elected members
- Appointed members
- ATA Carnet and Certificate of Origin Councils Chairs
- WCF Task Force Chairs

# Governing bodies

## WCF General Council

Members of the WCF General Council are chamber leaders who advise on and contribute to the WCF strategic work plan and programmes, serving as champions who help implement these initiatives in their respective countries and regions.

General Council members are also expected to uphold and promote the concept and role of chambers of commerce within their communities, while supporting the mission of WCF to represent the global interests of chambers within ICC. Additionally, they are tasked with monitoring the progress of the WCF strategic work plan to ensure alignment with the broader strategies and objectives of ICC.

As a WCF General Council member, you will have the opportunity to:

- Actively participate in the development of the WCF work plan
- Meet with chamber leaders from around the world and exchange best practices and knowledge
- Participate in task forces and work on innovative and creative ideas for the chamber community and its network of businesses.

For more information, read [WCF Article 7.14](#), outlining all responsibilities of the WCF General Council.

### WCF General Council membership:

- **Terms of service**

The term of a General Council member is three years and may be renewed once. A General Council member cannot be in the position for more than six years in total. In accordance to Article 7.10, an exception is possible in circumstances where WCF members in a country or territory have agreed, following a democratic and transparent election process, to nominate an elected candidate beyond the two term limit. In such a case, the WCF Chair, in coordination with the ICC Secretary General and the WCF Executive Committee, may decide to accept the nomination of that candidate.

- **Time commitment**

Members of the WCF General Council are expected to actively participate and attend WCF General Council meetings which are generally held twice a year, in spring and autumn. Members also commit to serving on task forces which provide platforms to discuss and move forward on key areas in line with the WCF strategy. They also commit to being available to members and staff.

*Please note that WCF General Council members have to be endorsed by the chamber. They also cannot be represented by another individual at meetings. The individual is elected and not the chamber. Members may be accompanied by a chamber colleague at meetings as an observer, subject to the WCF Chair's approval.*

*If a member is unable to participate in two meetings in a row, that member should consider tendering their resignation from the WCF General Council. Online participation is possible but in-person attendance is highly recommended.*

- **Financial commitment**

Members are responsible for their own travel expenses to and from meetings. There is no financial compensation for serving on the WCF General Council.

- **In case of resignation/departure from the chamber**

In the event that the WCF General Council member leaves the chamber, the member can retain their position on the WCF General Council provided that the chamber continues to express its support through a formal letter to the WCF Secretariat.



## WCF Executive Committee

The WCF Executive Committee is comprised of the WCF Chair and up to seven WCF Vice-Chairs (including the WCF First Vice-Chair). The ex-officio members of the Executive Committee are the ICC Secretary General and WCF Director.

The WCF Executive Committee takes actions and decisions for meeting the objectives of WCF and, in particular:

- Prepares reports on the activities and decisions of WCF for the WCF General Council
- Works with the WCF Secretariat on the strategic development of WCF in line with the vision, mission and purpose of ICC
- Develops projects and initiatives that will benefit and support WCF members
- Proposes the creation of, monitors and dissolves any WCF task forces
- Proposes the amendment of these Articles to the ICC Executive Board.

## World ATA Carnet Council

The World ATA Carnet Council (WATAC) is a specialised council managed by ICC. The day-to-day operation of WATAC is undertaken by the WCF Secretariat. The WCF Chair, in consultation with the ATA Carnet Administrative Committee (ATAC), the WATAC Executive Body and the WCF Secretariat, will designate the WATAC Chair and the WATAC Vice-Chair for election by WATAC.

WATAC is the forum that brings together national guaranteeing associations (NGAs) of the ICC [ATA Carnet International Guaranteeing Chain](#) (Guaranteeing Chain). The Guaranteeing Chain refers to a guaranteeing scheme administered by ICC to which all NGAs appointed by customs authorities are affiliated for the operation of the Customs Convention on ATA Carnets for the temporary admission of goods (Brussels, 6 December 1961) and / or the Convention on Temporary Admission (Istanbul, 26 June 1990). Issuing associations (IAs) under the NGAs' umbrella are affiliated directly or indirectly to the Guaranteeing Chain as well. However only NGAs are accepted as members to WATAC.

The mission of WATAC is to promote the use of the ATA Carnet to facilitate international trade and to ensure the integrity and sustainability of the Guaranteeing Chain. WATAC supports ICC in the operation, management and

expansion of the Guaranteeing Chain, in the promotion of best practices and in ensuring that NGAs comply with their responsibilities in relation to the ATA Carnet Guaranteeing activities and ATA Carnet issuing activities.

## International CO Council

[The Certificates of Origin](#) (CO) Council is a specialised council managed by ICC. The day-to-day operation of the CO Council is undertaken by the WCF Secretariat. The WCF Chair, in consultation with the CO Council and the WCF Secretariat, will appoint the Chair of the CO Council and three Vice-Chairs of the CO Council.

The CO Council is the forum that brings together chambers of commerce with an interest in CO issuance. The CO is an important international trade document that certifies that goods in a particular export shipment are wholly obtained, produced, manufactured or processed in a particular country. They declare the 'nationality' of the product and also serve as a declaration by the exporter to satisfy customs or trade requirements.

The mission of the CO Council is to enhance and promote the unique position of chambers of commerce as the natural agent in matters related to CO issuance and origin of goods, and to ensure the integrity and sustainability of the International Certificates of Origin Accreditation Chain.



# Elections

## 1. Application process

Chamber leaders from the WCF community will be invited to present their candidacy, endorsed by their chambers, for the upcoming WCF General Council elections. Candidates can express their interest from **1 December 2024** until **30 January 2025** by sending an email to [helene.kolmodin@iccwbo.org](mailto:helene.kolmodin@iccwbo.org). Upon confirmation, the candidate will receive instructions on the application process and the list of documents required alongside the support letter provided by the chamber.

## 2. Candidate profile

The ICC World Chambers Federation seeks Council members who demonstrate a strong commitment to supporting ICC and its WCF in ensuring the organisations remain relevant and effective in empowering chambers to better serve their communities. Council candidates are expected to:

1. Champion the role of WCF in representing the global interests of chambers within ICC.
2. Advise on and contribute to the strategic work plan and programmes of WCF.
3. Actively promote and implement these initiatives in their respective countries and regions.

The role of the WCF General Council calls for members with strong strategic vision and leadership capability. As part of ICC's broader efforts to promote gender balance in its working bodies, we strongly encourage female candidacies.

### Candidate criteria:

#### 1. Leadership and representation

The candidate must hold a senior leadership position in a recognised chamber, such as President, Vice President, Member of the Board, C-level executive, or an equivalent role. The candidate must demonstrate strong leadership and decision-making skills and knowledge of ICC and WCF priorities, aligned with the ICC Roadmap.

#### 2. Commitment and time dedication

The candidate must have the capacity to dedicate sufficient time to actively participate in WCF meetings and activities, have a supporting team and budget to attend events like the World Chambers Congress.

#### 3. Strategic and visionary thinking

The candidate must have a global perspective, the ability to identify opportunities and articulate innovative solutions, demonstrating an open and creative mindset that helps drive the chamber movement and the WCF agenda.

#### 4. Ethics and integrity

The candidate must possess high ethical standards and integrity, committing to work in accordance with ICC values: Connected, Pioneering, Liberated, and Generous.

#### 5. Diversity and inclusiveness

The candidate must be a strong advocate for diversity, particularly in the pursuit of gender parity in chamber leadership positions. Female candidacies are highly encouraged.

### 3. Validation of candidacy

The nomination of the candidate will be validated upon receipt by ICC. In each country or territory in which there is a national committee, group, or direct member, only one candidate may be nominated for the elected General Council member position.

In accordance with WCF Article 7.6, in circumstances where the WCF Secretariat receives more than one candidate for nomination for the same country or territory in which there is an ICC national committee or group, the WCF Executive Committee will decide which candidate should be nominated. This nomination follows the recommendation of the WCF Secretariat after consulting the national chamber, national committee or group (as appropriate and depending on each case).

In countries where there is no national committee or group, the WCF Secretariat in consultation with the WCF Chair will determine which candidate should be nominated, if more than one candidacy is received for nomination.

Transnational chambers of commerce that are WCF members may present a candidate for the elections. As transnational chambers do not operate necessarily by reference to a country or territory, the candidacy is not impacted by the one nomination per country or territory requirement.

For candidates from bilateral chambers, when submitting their candidacy, they should designate which country or territory they are representing and submit an endorsement letter from that country or territory's national committee (provided a national committee exists there).



## 4. Voting instructions

As WCF members, chambers have the important role of casting their votes online in April 2025 to select their preferred candidates to serve on the WCF General Council. Whether endorsing a candidate or not, each chamber vote counts and ensures that the WCF General Council comprises the right mix of chambers to represent the breadth of our global community. Details on how to vote will be communicated in due course.

Each WCF member, from every member country or territory, shall elect their 20 preferred candidates from the global WCF election ballot. The results of each chamber's vote shall be totaled, selecting each country or territory's preferred 20 candidates.

Each country or territory's preferred 20 candidates for the WCF General Council shall be allocated one to three votes, depending on the total number of chambers which are members in their country.

### Vote distribution per country:

From 1 to 15 chamber members 1 vote

From 16 to 30 chamber members 2 votes

More than 30 chamber members 3 votes

Transnational chambers of commerce that are WCF members are also eligible to vote for their preferred 20 candidates, and will be counted as one vote and not under a specific country or territory.

## 5. Election process

To facilitate the election process, we use an online platform. It holds all the necessary information about each candidate to help chambers choose their preferred candidates. The WCF Secretariat will provide all information needed for chambers to connect to the platform. The nomination of candidates by chambers will be possible during the election period. Campaigning is possible with the highest ethical standards and within the rules of data privacy and protection.

Voting instructions and access to the platform will be provided to chambers that are eligible to vote. The elections for the new WCF General Council will take place from **1 to 25 April 2025** online and are coordinated by the WCF Secretariat. It is extremely important that chambers take this opportunity to vote for their 20 (no more, no less) preferred candidates to serve as the new WCF General Council for the upcoming mandate and to make sure that the geographical and diversity balance is respected. The WCF Chair will receive the election results and appoint additional 20 members, taking diversity into consideration. The final results will be finalised and presented to the chamber community in **July 2025**.



## Frequently Asked Questions

### **Q: Can ICC national committees (NC) vote?**

**A:** No, only chambers that are members of ICC through their NCs or direct members (where no NC exists)

### **Q: How many votes can my chamber cast?**

**A:** One vote per chamber

### **Q: How many candidates can be presented from each country?**

**A:** One candidate from each country

### **Q: How many times can a chamber leader serve as a WCF General Council member ?**

**A:** A General Council member cannot be in the position for more than six years in total. In accordance with Article 7.10, an exception is possible in circumstances where WCF members in a country or territory have agreed, following a democratic and transparent election process, to nominate an elected candidate beyond the two-term limit. In such case, the WCF Chair, in coordination with the ICC Secretary General and the WCF Executive Committee, may decide to accept the nomination of that candidate.

### **Q: What is the difference between an elected member and an appointed member?**

**A:** An elected member is part of the 20 members that received most votes. An appointed member is recommended by the WCF Chair to ensure balance in geography, gender, size and type of chamber and other criteria in the WCF General Council.



**ICC World Chambers Federation**

33-43 avenue du Président Wilson,  
75116 Paris, France

[www.iccwbo.org](http://www.iccwbo.org) [@iccwbo](https://twitter.com/iccwbo) [f @iccwbo](https://www.facebook.com/iccwbo)  
[in@International Chamber of Commerce](https://www.linkedin.com/company/international-chamber-of-commerce)

